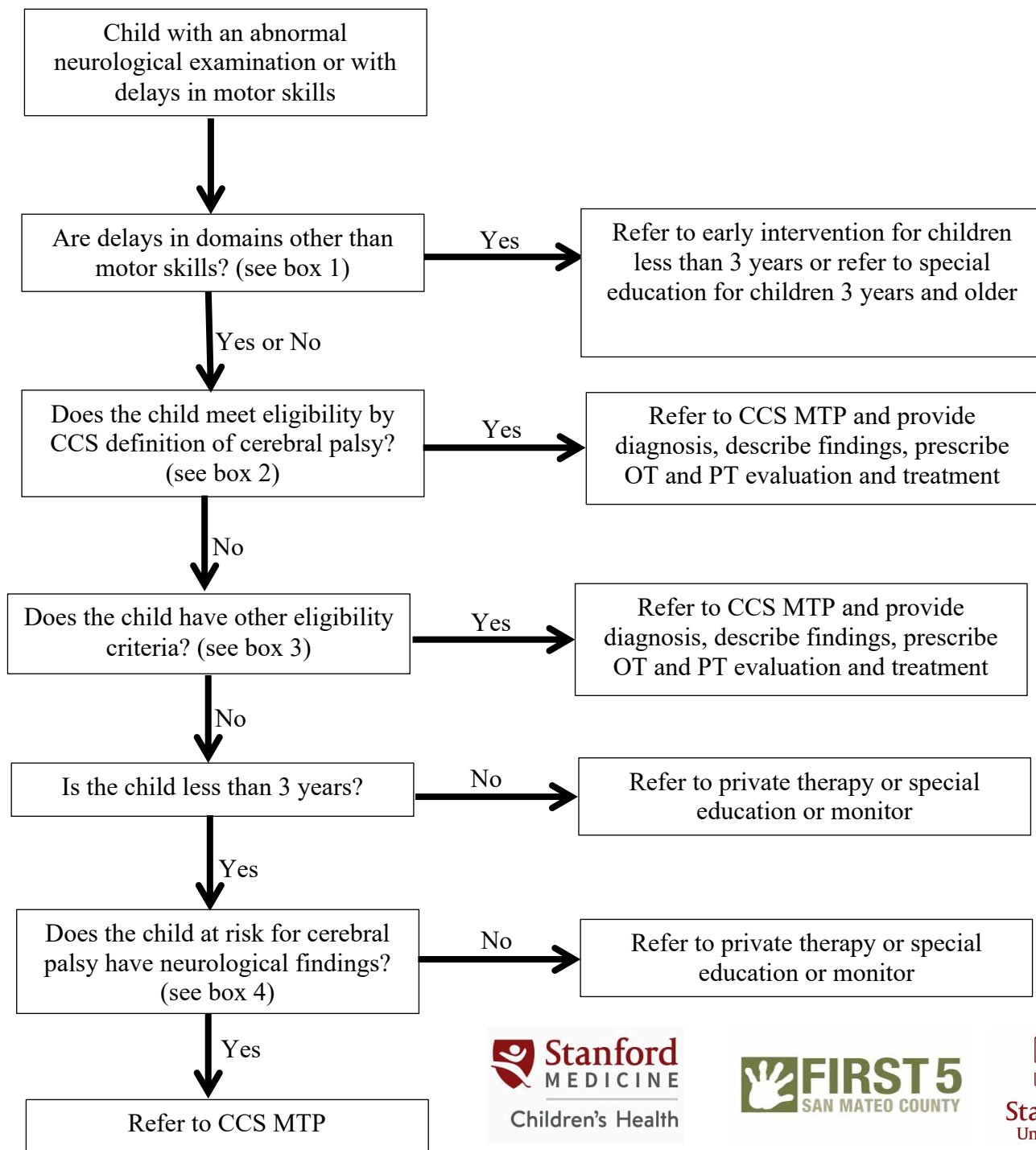


California Children's Services, Medical Therapy Program (CCS MTP)



- 1** Domains:
- cognitive
 - expressive communication
 - receptive communication
 - social or emotional
 - adaptive

- 2** CCS definition of cerebral palsy:
- rigidity/spasticity or hypotonia plus persistent primitive reflexes
 - ataxia
 - involuntary movements (athetoid, chorea, dystonia)

- 3** Other eligibility criteria:
- neuromuscular disease
 - nerve injury
 - deformity, amputation
 - single orthopedic condition is not medically eligible

- 4** Neurological findings:
- symptoms in CCS definition or CP OR
 - 2 of the following:
 - exaggeration or persistence of primitive reflexes beyond normal age
 - increased DTR
 - abnormal posture
 - asymmetry
 - Age 1-3 years old:
 - hypotonicity AND exaggeration of primitive reflexes + one other sign
 - Less than 1 year old:
 - hypotonicity + one other sign

